



DARTMOUTH COLLEGE MEMORIAL STADIUM

Demolition Profile

Costello Dismantling Co., Inc.

Ivy League Dismantling

The ivy-covered brick walls of Memorial Stadium have stood for 91 years, and hopefully will stand for 91 more, but the students and alumni at Dartmouth College will soon have a state of the art facility to watch football and track events.

Beginning the day after the football season ended, Costello Dismantling sent a crew to Hanover, New Hampshire to begin prepping the stadium for a radical facelift. With the exterior walls braced, an experienced labor crew dissected the guts of the building, separating key structural members from the historic walls and allowing a high-reach excavator to enter and surgically pick apart the bleachers and press box.

As work took place in the heart of a busy college campus, safety and respect for the community was at the heart of every action. Our work area was carefully delineated and every attempt was made to inform the community about our intended actions.

Look to the Future

When construction is completed on the new stadium, it will be comfortable, feature the latest in accessibility and technology and will rival or surpass other Ivy League facilities. This incredible engineering feat, however, allows for all of these advances while keeping the iconic exterior walls.

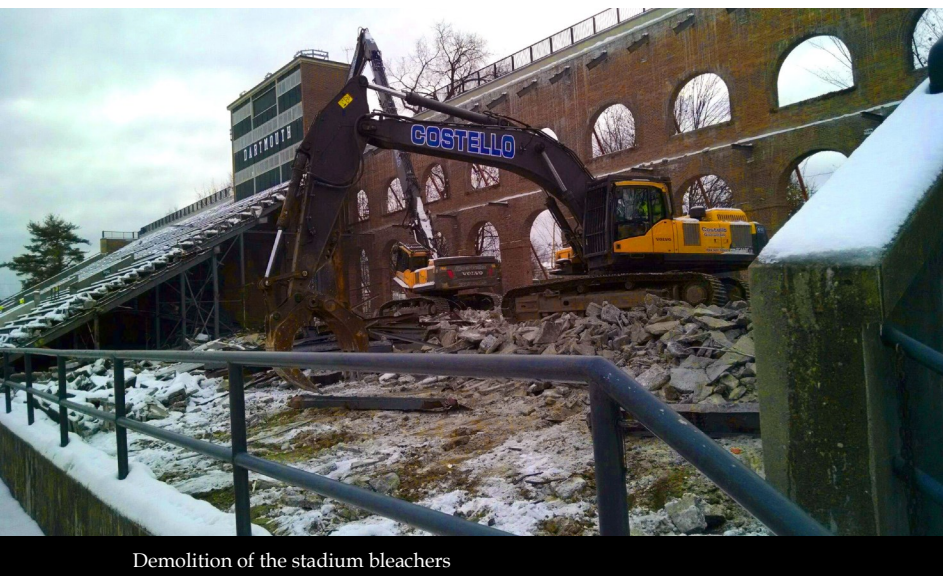
The project was completed without any safety incidents, on time and on budget.

"This was not an easy demolition job but Paul and his crew did a great job including paying attention to safety. I look forward to working with Costello again."

- Dick Terk

Vice President/Project Manager

Engleberth Construction



Demolition of the stadium bleachers

Owner: **Dartmouth College**
Location: **Hanover, NH**
General Contractor: **Engleberth Construction**
Project Manager: **Rob Holmes**
Superintendent: **Paul Rowan**
Start Date: **November 2014**
Completion Date: **January 2015**

Historic Preservation

The Memorial Stadium project was special because the new construction plans allowed for the preservation of the historic façade. This type of dismantling approach is most often utilized in urban areas – many times in Europe – to preserve the character of a historic neighborhood.

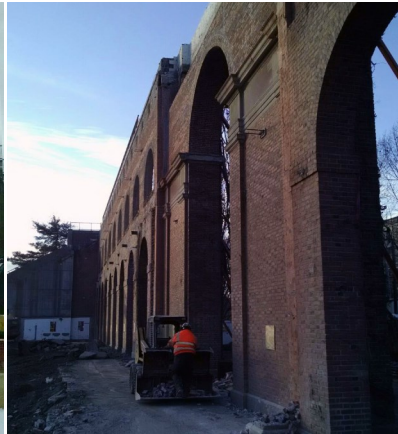
Preserving a façade or key structural components intact isn't always a practical option, but that doesn't mean that elements of a structure can't be saved! A [recent project](#) of ours included salvaging stone from a historic clock tower so it could be rebuilt as a monument adjacent to the new construction.



Inspecting the structural separation



A Volvo 460 High Reach Excavator approaches the press box



Bare walls are ready for new construction



COSTELLO DISMANTLING

www.costelldismantling.com
45 Kings Highway, West Wareham, MA 02576
Office: (508) 291-2324 Fax: (508) 291-2325